



Blackwater Gold Project

Cultural and Spiritual Resources Management Plan

November 2021

CONTENTS

ACRONYMS AND ABBREVIATIONS	III
1. PROJECT OVERVIEW	1
2. PURPOSE AND OBJECTIVES	2
3. ROLES AND RESPONSIBILITIES	3
4. COMPLIANCE OBLIGATIONS, GUIDANCE AND BEST MANAGEMENT PRACTICES	6
4.1 Legislation	6
4.1.1 <i>Heritage Conservation Act</i>	6
4.2 Compliance with Environmental Assessment Certificate and Federal Decision Statement Conditions	7
4.3 Existing Permits	7
4.4 Guidelines and Best Management Practices	7
5. ADAPTIVE MANAGEMENT FRAMEWORK.....	8
6. TRAINING	9
7. BASELINE HERITAGE RESOURCE INFORMATION	10
7.1 Known Archaeological Resources	10
7.2 Known Cultural Heritage Sites	13
7.3 Known Spiritual Sites	15
7.3.1 Mount Davidson and Tsacha Mountain	15
7.3.2 Tatelkuz Lake	15
7.3.3 Kuyakuz Mountain and Kuyakuz Lake	15
7.4 Known Paleontological Sites	16
8. PROTECTION MEASURES	17
8.1 Known Sites	17
8.1.1 Archaeological Sites	17
8.1.2 Historic Site	18
8.1.3 Culturally Modified Tree Sites	18
8.1.4 Trails	18
8.1.5 Paleontological Sites	18
8.2 As-yet Unknown Sites	18
8.3 Confidentiality	19
9. PROCESS FOR IDENTIFICATION OF CULTURAL AND SPIRITUAL AREAS OF IMPORTANCE	20
10. IMPLEMENTATION	21
10.1 Monitoring	21
10.1.1 Construction Monitoring	21
10.1.2 Annual Monitoring	22
10.2 Site Access for Cultural and Spiritual Purposes	22

11. REPORTING AND RECORD KEEPING	23
11.1 Reporting	23
11.1.1 Federal Decision Statement.....	23
11.1.2 Environmental Assessment Certificate.....	23
11.1.3 Annual Report	23
11.2 Record Keeping	24
12. EVALUATION AND ADAPTIVE MANAGEMENT.....	25
13. PLAN REVISION	26
14. QUALIFIED PERSON OR QUALIFIED PROFESSIONAL	27
15. REFERENCES.....	28

APPENDIX A	CONCORDANCE WITH ENVIRONMENTAL ASSESSMENT CERTIFICATE #M19-01 (JUNE 21, 2019)
APPENDIX B	CONCORDANCE WITH FEDERAL DECISION STATEMENT (APRIL 15, 2019)
APPENDIX C	ARCHAEOLOGICAL AND CULTURAL HERITAGE CHANCE FIND PROCEDURE

List of Tables

Table 3-1: BW Gold Roles and Responsibilities	3
Table 7.1-1: Known Archaeological Sites Identified within the Mine Site	10
Table 7.1-2: Known Archaeological Sites Identified within 150 m of Proposed Transmission Line Routes Centre Line	10
Table 7.2-1: Historic Cultural Heritage Resources (CHRs) Located within the Mine Site	13
Table 7.2-2: Historic Cultural Heritage Resources (CHRs) Located within 150 m of Proposed Transmission Line Routes Centreline	14
Table 7.3-1: Paleontological Sites within 150 m of the Centreline of the Proposed Transmission Line Routes	16

List of Figures

Figure 7-1: Known Cultural Heritage Resources within Mine Site	11
Figure 7-2: Known Cultural Heritage Resources within Transmission Line Routes	12

ACRONYMS AND ABBREVIATIONS

Aboriginal Groups	Lhoosk'uz Dené Nation, Ulkatcho First Nation, Nadleh Whut'en First Nation, Saik'uz First Nation, Stelat'en First Nation and Nazko First Nation (as defined in the Project's Environmental Assessment Certificate #M19-01)
Agency	Impact Assessment Agency of Canada
AIA	Archaeological Impact Assessment
Artemis	Artemis Gold Inc.
BB	Big Bend
BC	British Columbia
Blackwater	Blackwater Gold Project
BLO	Blaze oval
BSD	Bark stripped diamond
BSL	Bark stripped lenticular
BSO	Barked stripped oval
BW Gold	BW Gold LTD.
CEA Agency	Canadian Environmental Assessment Agency
CEO	Chief Executive Officer
CSMP or plan	Cultural and Spiritual Resources Management Plan
CHR	Cultural Heritage Resources
CM	Construction Manager
CMT	Culturally modified tree
COO	Chief Operating Officer
DS	Decision Statement
EM	Environmental Manager
EMC	Environmental Monitoring Committee
EMLI	Ministry of Energy, Mines and Low Carbon Innovation
EMS	Environmental Management System
EPCM	Engineering, Procurement and Construction Management
ENV	Ministry of Environment and Climate Change Strategy
ERM	ERM Consultants Canada Ltd.
FLNRORD	Ministry of Forests, Lands, Natural Resource Operations and Rural Development
GM	General Manager

Indigenous groups	Lhoosk'uz Dené Nation, Ulkatcho First Nation, Nadleh Whut'en First Nation, Saik'uz First Nation, Stellat'en First Nation, Nazko First Nation, Skin Tyee Nation, T̓silhqot'in Nation, Métis Nation British Columbia and Nee-Tahi-Buhn Band (as defined in the federal Decision Statement)
km	Kilometre
LDN	Lhoosk'uz Dené Nation
New Gold	New Gold Inc.
NFN	Nazko First Nation
NWFN	Nadleh Whut'en First Nation
Project	Blackwater Gold Project
Qualified Person	A person who has training, experience and expertise in a discipline relevant to the field of practice set out in the condition (as defined in Environmental Assessment Certificate #M19-01)
Qualified Professional	A person who has training, experience and expertise in a discipline relevant to the field of practice set out in the condition, and who is registered with the appropriate professional organization in British Columbia, is acting under that organization's code of ethics and is subject to disciplinary action by that organization (as defined in the Project's Decision Statement).
SFN	Saik'uz First Nation
StFN	Stellat'en First Nation
SMR	Stellako/Mills Ranch
t	Tonnes
UFN	Ulkatcho First Nation
VP	Vice President

1. PROJECT OVERVIEW

The Blackwater Gold Project (the Project or Blackwater) is a gold and silver open pit mine located in central British Columbia (BC), approximately 112 kilometres (km) southwest of Vanderhoof, 160 km southwest of Prince George, and 446 km northeast of Vancouver.

The Project is presently accessed via the Kluskus Forest Service Road (FSR), the Kluskus-Ootsa FSR and an exploration access road, which connects to the Kluskus-Ootsa FSR at km 142. The Kluskus FSR joins Highway 16 approximately 10 km west of Vanderhoof. A new, approximately 13.8 km road (Mine Access Road) will be built to replace the existing exploration access road, which will be decommissioned. The new planned access is at km 124.5. Driving time from Vanderhoof to the mine site is about 2.5 hours.

Major mine components include a tailings storage facility (TSF), ore processing facilities, waste rock, overburden and soil stockpiles, borrow areas and quarries, water management infrastructure, water treatment plants, accommodation camps and ancillary facilities. The gold and silver will be recovered into a gold-silver doré product and shipped by air and/or transported by road. Electrical power will be supplied by a new approximately 135 km, 230 kilovolt (kV) overland transmission line that will connect to the BC Hydro grid at the Glenannan substation located near the Endako mine, 65 km west of Vanderhoof.

The Blackwater mine site is located within the traditional territories of Lhoosk'uz Dené Nation (LDN), Uikatcho First Nation (UFN), Skin Tyee Nation and Tsilhqot'in Nation. The Kluskus and Kluskus-Ootsa FSRs and Project transmission line cross the traditional territories of Nadleh Whut'en First Nation (NWFN), Saik'uz First Nation (SFN), and Stellat'en First Nation (StFN; collectively, the Carrier Sekani First Nations) as well as the traditional territories of the Nazko First Nation (NFN), Nee Tahi Buhn Band, Cheslatta Carrier Nation and Yekooche First Nation (EAO 2019a, 2019b).

Project construction is anticipated to take two years. Mine development will be phased with an initial milling capacity of 15,000 tonnes per day (t/d) or 5.5 million tonnes per annum (Mtpa) for the first five years of operation. After the first five years, the milling capacity will increase to 33,000 t/d (or 12 Mtpa) for the next five-years, and to 55,000 t/d (20 Mtpa) in Year 11 until the end of the 23-year mine life. The Closure phase is 24 to approximately 45 years, ending when the Open Pit has filled and the TSF is allowed to passively discharge to Davidson Creek, and the Post-closure phase is 46+ years.

New Gold Inc. (New Gold) received Environmental Assessment Certificate #M19-01 (EAC) on June 21, 2019 under the 2002 *Environmental Assessment Act* (EAO 2019c) and a Decision Statement (DS) on April 15, 2019 under the *Canadian Environmental Assessment Act, 2012* (CEA Agency 2019). In August 2020, Artemis Gold Inc. (Artemis) acquired the mineral tenures, assets and rights in the Blackwater Project that were previously held by New Gold. On August 7, 2020, the Certificate was transferred to BW Gold LTD. (BW Gold), a wholly-owned subsidiary of Artemis, under the 2018 *Environmental Assessment Act*. The Impact Assessment Agency of Canada (Agency) notified BW Gold on September 25, 2020 to verify that written notice had been provided within 30 days of the change of proponent as required in Condition 2.16 of the DS, and that a process had been initiated to amend the DS.

2. PURPOSE AND OBJECTIVES

The purpose of the Cultural and Spiritual Resources Management Plan (CSMP) is to mitigate the Project's potential effects on known and as-yet unknown heritage resources or values. The types of heritage resources covered by the plan are informed by the BC *Heritage Conservation Act* includes the following definitions of "heritage" that are applicable to this plan:

"heritage object" means, whether designated or not, personal property that has heritage value to British Columbia, a community or an aboriginal people

"heritage site" means, whether designated or not, land, including land covered by water, that has heritage value to British Columbia, a community or an aboriginal people

"heritage value" means the historical, cultural, aesthetic, scientific or educational worth or usefulness of a site or object

The federal DS defines "heritage value" as *"the aesthetic, historic, scientific, cultural, social or spiritual importance or significance for past, present or future generations."*

Heritage resources considered in the CSMP include archaeological sites, historic sites, cultural sites (trails, historic settlements, log cabins), spiritual sites, culturally modified trees (CMTs), blazes and paleontological sites (dinosaur trackways/preserved foot prints and bones and plant fossils and shell beds and other invertebrate fossils).

The objective of the CSMP is to provide a clear process to guide the development, implementation, and monitoring of measures to address adverse effects on known and as-yet unknown heritage resources or values. The CSMP will be implemented during the Project's Construction, Operations and Closure phases.

3. ROLES AND RESPONSIBILITIES

BW Gold has the obligation of ensuring that all commitments are met and that all relevant obligations are made known to mine personnel and site contractors during all phases of the mine life. A clear understanding of the roles, responsibilities, and level of authority that employees and contractors have when working at the mine site is essential to meet Environmental Management System (EMS) objectives.

Table 3-1 provides an overview of general environmental management responsibilities during all phases of the mine life for key positions that will be involved in environmental management. Other positions not specifically listed in Table 3-1 but who will provide supporting roles include independent environmental monitors, Independent Tailings Review Board, TSF qualified person, and other qualified persons and qualified professionals.

Table 3-1: BW Gold Roles and Responsibilities

Position	Responsibility
Chief Executive Officer (CEO)	The CEO is responsible for overall Project governance. Reports to the Board.
Chief Operating Officer (COO)	The COO is responsible for engineering and Project development and coordinates with the Mine Manager to ensure overall Project objectives are being managed. Reports to CEO.
Vice President (VP) Environment & Social Responsibility	The VP is responsible for championing the Environmental Policy Statement and EMS, establishing environmental performance targets and overseeing permitting. Reports to COO.
General Manager (GM) – Development	The GM is responsible for managing project permitting, the Project's administration services and external entities, and delivering systems and programs that ensure Artemis's values are embraced and supported: Putting People First, Outstanding Corporate Citizenship, High Performance Culture, Rigorous Project Management and Financial Discipline. Reports to COO.
Mine Manager	The Mine Manager, as defined in the <i>Mines Act</i> , has overall responsibility for mine operations, including the health and safety of workers and the public, Environmental Management System (EMS) implementation, overall environmental performance and protection, and permit compliance. The Mine Manager may delegate their responsibilities to qualified personnel. Reports to GM.
Construction Manager (CM)	The CM is accountable for ensuring environmental and regulatory commitments/ and obligations are being met during the construction phase. Reports to GM.
Environmental Manager (EM)	The EM is responsible for the day-to-day management of the Project's environmental programs and compliance with environmental permits, updating EMS and MPs. The EM or designate will be responsible for reporting non-compliance to the CM, and Engineering, Procurement and Construction Management (EPCM) contractor, other contractors, the Company and regulatory agencies, where required. Supports the CM and reports to Mine Manager.
Departmental Managers	Departmental Managers are responsible for implementation of the EMS relevant to their areas. Report to Mine Manager.
Indigenous Relations Manager	Indigenous Relations Manager is responsible for Indigenous engagement throughout the life of mine. Also responsible for day-to-day management and communications with Indigenous groups. Reports to VP, Environment & Social Responsibility.
Community Relations Advisor	Community Relations Advisor is responsible for managing the Community Liaison Committee and Community Feedback Mechanism. Reports to Indigenous Relations Manager.

Position	Responsibility
Environmental Monitors	Environmental Monitors (includes Environmental Specialists and Technicians) are responsible for tracking and reporting on environmental permit obligations through field-based monitoring programs. Report to EM.
Aboriginal Monitors	Aboriginal Monitors are required by EAC #M19-01 Condition 17 and will be responsible for monitoring the Project's potential effects on Aboriginal interests. Aboriginal Monitors will be involved in adaptive management and follow-up monitoring programs. Report to EM.
Qualified Professional and Qualified Persons	Qualified professionals and qualified persons will be retained to review objectives and conduct various aspects of environmental and social monitoring as specified in EMPs and social management plans (MPs).

BW Gold will employ a qualified person as an EM who will ensure that throughout the Construction phase the EMS requirements are established, implemented and maintained, and that environmental performance is reported to management for review and action. The EM is responsible for retaining the services of qualified persons or qualified professionals with specific scientific or engineering expertise to provide direction and management advice in their areas of specialization. The EM will be supported by Environmental Monitors that will include Environmental Specialists and Technicians and a consulting team of subject matter experts in the fields of environmental science and engineering.

During the Construction phase, the EPCM contractor and sub-contractors, will report to the CM. The EPCM contractor will be responsible for ensuring that impacts are minimized, and environmental obligations are met during the Construction phase. For non-EPCM contractors, who will perform some of the minor works on site, the same reporting structure, requirements, and responsibilities will be established as outlined above. BW Gold will maintain overall responsibility for management of the construction and operation of the mine site, and will therefore be responsible for establishing employment and contract agreements, communicating environmental requirements, and conducting periodic reviews of performance against stated requirements.

The CM is accountable for ensuring that environmental and regulatory commitments/obligations are being met during the Construction phase. The EM will be responsible for ensuring that construction activities are proceeding in accordance with the objectives of the EMS and associated MPs. The EM or designate will be responsible for reporting non-compliance to the CM, and EPCM contractor, other contractors, the Company and regulatory agencies, where required. The EM or designate will have the authority to stop any construction activity that is deemed to pose a risk to the environment; work will only proceed when the identified risk has been addressed and concerns rectified.

Environmental management during operation of the Project will be integrated under the direction of the EM, who will liaise closely with Departmental Managers and will report directly to the Mine Manager. The EM will be supported by the Company Corporate Office and Vice President of Environment and Social Responsibility in order to provide an effective and integrated approach to environmental management and ensure adherence to corporate environmental standards. The EM will be accountable for implementing the approved MPs and reviewing them periodically for effectiveness. Departmental Managers (e.g., mining, milling, and plant/site services) will be directly responsible for implementation of the EMS and MPs and Standard Operating Procedures relevant to their areas. All employees and contractors are responsible for daily implementation of the practices and policies contained in the EMS.

During Closure and Post-closure staffing levels will be reduced to align with the level of activity associated with these phases. Prior to initiating closure activities, BW Gold will revisit environmental and health and safety roles and responsibilities to ensure the site is adequately resourced to meet permit monitoring and reporting requirements. The Mine Manager will have overall responsibility for Closure and Post-closure activities at the mine site.

Pursuant to Condition 19 of the Project's EAC #M19-01, BW Gold has established an EMC to facilitate information sharing and provide advice on the development and operation of the Project, and the implementation of EAC conditions, in a coordinated and collaborative manner. Committee members include representatives of the Environmental Assessment Office (EAO), UFN, LDN, NWFN, StFN, SFN, NFN, Ministry of Energy, Mines and Low Carbon Innovation (EMLI), Ministry of Environment and Climate Change Strategy (ENV) and Ministry of Forests, Lands, Natural Resource Operations and Rural Development (FLNRORD).

Pursuant to Condition 17 of the EAC, Aboriginal Group Monitor and Monitoring Plan, BW Gold will retain or provide funding to retain a monitor for each Aboriginal Group prior to commencing construction and through all phases of the mine life. The general scope of the monitor's activities will be related to monitoring for potential effects from the Project on the Aboriginal Group's Aboriginal interests.

4. COMPLIANCE OBLIGATIONS, GUIDANCE AND BEST MANAGEMENT PRACTICES

4.1 Legislation

Federal legislation applicable to heritage resources includes:

- *Impact Assessment Act*; and
- *United Nations Declaration on the Rights of Indigenous Peoples Act*.

Provincial legislation applicable to heritage resources includes:

- *Coroners Act*;
- *Cremation, Internment and Funeral Services Act*;
- *Declaration on the Rights of Indigenous Peoples Act*;
- *Environmental Assessment Act*;
- *Forest and Range Practices Act*;
- *Forest Planning and Practices Regulation*;
- *Freedom of Information and Protection of Privacy Act*;
- *Heritage Conservation Act*;
- *Land Act*;
- *Fossil Definition Regulation*, BC Reg. 214/2011;
- *Local Government Act*;
- *Mineral Tenure Act*;
- *Mineral Definition Modification Regulation*;
- *Mines Act*; and
- Health, Safety and Reclamation Code for Mines in British Columbia.

4.1.1 *Heritage Conservation Act*

Section 12.1 of the *Heritage Conservation Act* provides automatic protection for artifacts, features, materials or other physical evidence of human habitation or use on or before 1846 as well as petroglyphs, petroforms, heritage wrecks, and burials regardless of age.

There is no primary legislation in BC that automatically protects intangible cultural and spiritual resources such as spiritual sites, transformer stones, ceremonial sites and areas with Indigenous place names.

Part 1 Section 4 of the *Heritage Conservation Act* (1996) provides:

the Province (BC) may enter into a formal agreement with Indigenous Nations for the conservation and protection of heritage sites and objects that represent the cultural heritage of the aboriginal people who are represented by that Indigenous Nation.

An agreement under this section would afford the desired protection under section 12.1 of the Act.

Permits issued under sections 12.2 and 12.4 of the Act include heritage investigation and inspection permits:

- Heritage inspections involve physical examinations and other research to identify the heritage value of a property or a portion of it, and to establish, if the property is a heritage site or heritage object, including the need for protection and conservation, or conformance with heritage protection requirements.
- Heritage investigations involve archaeological or other systematic studies of heritage property to reveal their history, and may include the recording, removal and analysis of artifacts, features and other material necessary for the purpose of the heritage investigation.

4.2 Compliance with Environmental Assessment Certificate and Federal Decision Statement Conditions

The CSMP addresses the requirements in EAC Condition 18 (Cultural and Spiritual Resources Management Plan) and DS Condition 7 (Physical and Cultural Heritage and Structures, Sites or Things of Historical, Archaeological, Paleontological or Architectural Significance). This plan has been prepared by a Qualified Person/Qualified Professional.

Concordance tables identifying where the requirements in EAC Condition 18 and DS Condition 7 can be found in the CSMP are provided in Appendix A and Appendix B respectively.

4.3 Existing Permits

BW Gold received *Mines Act* Permit M-246 on June 22, 2021, authorizing early construction works for the Project. Part C (Protection of Land and Watercourses) Condition 9 of the permit includes the following requirements related to archaeological resources:

a) Prior to beginning any mechanized surface disturbance on undisturbed lands, the Permittee must conduct field surveys consistent with archaeological and cultural heritage resources management procedures consistent with the provisions of the BC Heritage Conservation Act.

(b) For those sites that cannot be avoided, the Permittee must contact the Archaeology Branch of the Ministry of Forests, Lands, Natural Resource Operations and Rural Development and make arrangements to scientifically excavate and record findings.

Archer CRM Partnership has received Heritage Inspection Permit 2021-0322, which authorizes archaeological inspections for the Blackwater mine area and transmission line.

4.4 Guidelines and Best Management Practices

Guidelines and best management practices related to cultural heritage resources include:

- BC Archaeological Impact Assessment Guidelines (Archaeology Branch 1998);
- BC Fossil Management Framework (n.d.); and
- Technical Guidance for Assessing Physical and Cultural Heritage or and Structure, Site or Thing (CEA Agency 2015).

5. ADAPTIVE MANAGEMENT FRAMEWORK

The CSMP is a living document that will evolve over time in response to monitoring results, chance finds, and the results of archaeological impact assessments (AIAs). The plan incorporates adaptive management as follows:

■ Plan

- Complete AIA(s) within or adjacent to Project components that have not been previously assessed due to changes to infrastructure footprints to identify heritage sites.
- Engage with Indigenous groups to identify cultural and spiritual sites and related mitigation measures.
- Engage with Indigenous groups to determine confidentiality or known sites.

■ Do

- Implement training.
- Implement mitigation measures for known heritage sites.
- Implement Archaeology and Cultural Heritage Chance Find Procedure (Chance Find Procedure).

■ Monitor

- Maintain records to document monitoring of heritage sites and chance finds.
- Implementation of CSMP.
- Document any contraventions of the CSMP.

■ Adjust

- EM review of effectiveness of prevention measures.
- Update the CSMP as required.

6. TRAINING

Employees and contractors will receive information related to heritage resources previously identified on site as well as cross-cultural training on the history of local Indigenous nations and training on the Chance Find Procedure on their arrival on site through an environmental on-boarding training session and prior to the start of work as part of the Site Orientation. The purpose of this training is to provide all site personnel with a basic level of awareness related to heritage, spiritual and archaeological resources and an understanding of their obligations regarding compliance with plan, regulatory requirements, commitments and best practices.

Site supervisors will be provided with a copy of the CSMP and will receive additional training with respect to the Chance Find Procedure (Appendix C).

BW Gold will regularly review and update the training and awareness related to the plan based on changes in training needs and regulatory requirements.

If additional No Work Zones are identified during the course of the Project, this information will be provided to employees and contractors and all maps will be updated accordingly. If there is an immediate potential for impact then **work in the area will stop** until the No Work Zones have been provided and delineated. Information on additional No Work Zones will be communicated through the EM to the Departmental Manager and Indigenous Relations Manager. The additional No Work Zones will be added to the Annual and Construction Monitoring responsibilities (Section 10.1).

7. BASELINE HERITAGE RESOURCE INFORMATION

An AIA under *Heritage Conservation Act* Permit #2012-0295 was undertaken in fall 2012 and summer 2013, which covered the mine site footprint and Project linear infrastructure (AMEC 2013). Known palaeontological, historic and CMTs within and adjacent to the mine site and linear components are shown on Figures 7-1 and 7-2 and described below. Archaeological sites are described below but cannot be shown on public documents.

7.1 Known Archaeological Resources

There are five known archaeological sites located within the mine site boundary (Table 7.1-1) and eight known archaeological sites within 150 m of the centreline of the proposed transmission line routes (Table 7.1-2).

Table 7.1-1: Known Archaeological Sites Identified within the Mine Site

Borden Number	Site Type	Mine Site Component	Distance from Mine Site Component (m)	Permit Number
FhSe-73	Lithic Scatter and Cultural Depression	Northern Diversion Road	125	2012-0295
FhSe-74	Lithic Scatter	Mine Access Road	65	2012-0295
FhSf-4	Lithic Scatter	North Interception Trench	0	2012-0295
FhSf-7	Lithic Scatter	Central Diversion Channel North	930	2012-0295
FhSf-8	Cache Pit	Central Diversion Channel North	970	2012-0295

Table 7.1-2: Known Archaeological Sites Identified within 150 m of Proposed Transmission Line Routes Centre Line

Borden Number	Site Type	Distance from Proposed New Alignment (PNA) Centreline (m)	Distance from PNA-Stellako/ MillsRanch (SMR) Re-routes Centreline (m)	Distance from PNA-Big Bend (BB) Re-route Centreline (m)	Permit Number
FhSe-43	Trail	0	0	0	2000-0129, 2001-0171
FhSe-60	Lithic Scatter and Cache Pit	28	28	28	2002-0104
GaSf-43	Cache Pit	471	16	471	2012-0295
GaSf-44	Cache Pit	>500	10	>500	2012-0296
GaSf-45	Cache Pit	494	17	494	2012-0295
GaSf-46	Cache Pit	363	15	363	2012-0295
GaSf-47	Cache Pits	0	242	0	2012-0295
GaSf-48	Cache Pit	32	216	32	2012-0295

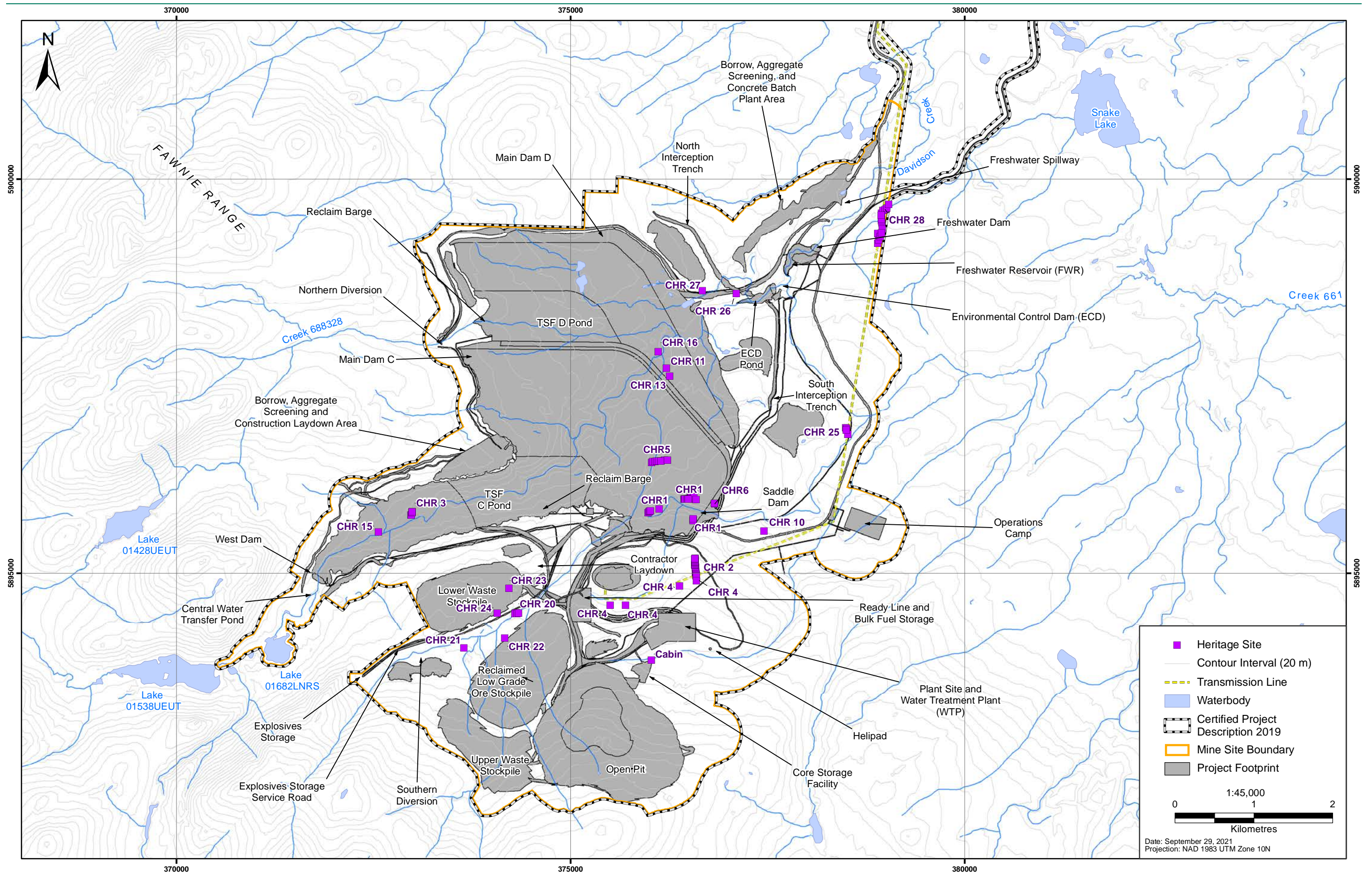


Figure 7-1: Known Cultural Heritage Resources within Mine Site

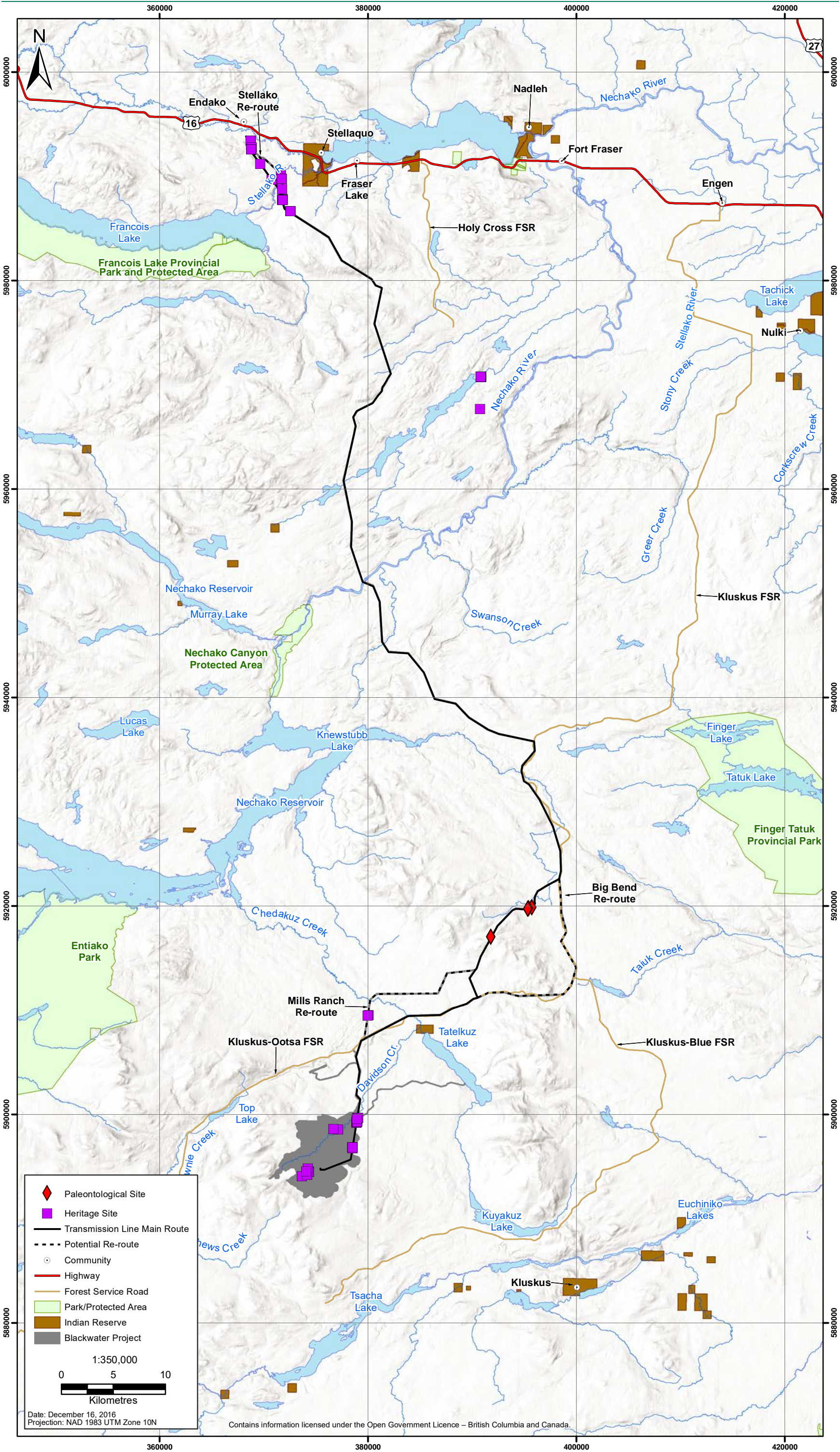


Figure 7-2: Known Cultural Heritage Resources within Transmission Line Routes

7.2 Known Cultural Heritage Sites

Known cultural heritage resources within the mine site include 20 CMTs and one historic cabin (Table 7.2-1; Figure 7-1). There are 25 cultural heritage resources within 150 m of the proposed transmission line routes (Table 7.2-2; Figure 7-2).

Table 7.2-1: Historic Cultural Heritage Resources (CHRs) Located within the Mine Site

CHR#	Type ¹	Year ^{2,3}	Comments	Distance to Infrastructure	Infrastructure
1	BSO	Unknown	21 blazes on two NE/SW trending terraces. Likely from mineral exploration	0	TSF
2	BSO	Unknown	19 N/S trending blazes. Likely from mineral exploration	0	Transmission Line
3	BSO	Unknown	5 historic blazes trending NW/SE for 50 m towards Davidson Creek	0	TSF
4	BSO	Unknown	4 blazed trees trending N/S over 1.1 km	0	Transmission Line
5	BSO/BSD	Unknown	8 blazed trees trending E/W over 200 m	0	TSF
6	BSL	1897/1907 (+/- 10 years)	Two standing dead trees	0	TSF
10	Bound	Unknown	Single "bound" CMT	75 m north	Access Road
11	Bound	Unknown	Single "bound" CMT	0	TSF
13	Bound	Unknown	Bound CMT	0	TSF
15	BSO	Unknown	Advanced state of decay. Unable to date.	0	TSF
16	BSL	Unknown	Advanced state of decay. Unable to date.	0	TSF
20	BLO	Unknown	4 blazed trees in linear alignment suggesting association with mineral exploration.	101 m northeast	Low Grade Ore Stockpile
21	BLO	<30	2 blazed trees in linear alignment suggesting association with mineral exploration	173 m southeast	Mine Site Road
22	BLO	<20	3 chainsaw cut blazed trees in linear alignment suggesting association with mineral exploration	0	Low Grade Ore Stockpile
23	BLO	<20	1 chainsaw cut blazed tree located on a game trail.	0	Lower Waste Stockpile
24	BLO	Unknown	6 blazed trees in linear alignment suggesting association with mineral exploration	70 m north	Low Grade Ore Stockpile

CHR#	Type ¹	Year ^{2,3}	Comments	Distance to Infrastructure	Infrastructure
25	N/A	Unknown	11 blazed trees in linear alignment suggesting association with mineral exploration	0	Transmission Line
26	Shaped	Post 1935	1 CMT sampled	10 m south	Mine Site Road
27	Shaped	Post 1993	1 CMT sampled	36 m north	Mine Site Road
28	BSO	1936-1993	Trees along a well used trail	0	Transmission Line
Cabin	Cabin	1940-1980	Log cabin foundation and kitchen wares	17 m north	Core Storage Facility

¹ BSO: Barked Stripped Oval, BSD: Bark Stripped Diamond, BSL: Bark Stripped Lenticular, BLO: Blaze Oval.

² The CMTs referenced in the table were identified in the EA submission as post-1846. The Year Modified is noted as 'Unknown' if the tree was not cored during the AIA and therefore the date is unknown. In these instances, professional judgement may have been used to determine if the tree pre-dated 1846.

³ It is difficult to determine the exact date of the CMT if the tree is too rotten or if in the professional opinion of archaeologist, the scar obviously post-dates 1846. This determination is often made based on the age of the tree or the nature of the modification.

Table 7.2-2: Historic Cultural Heritage Resources (CHRs) Located within 150 m of Proposed Transmission Line Routes Centreline

CHR#	Type ¹	Year Modified ^{2,3}	Comments	Distance from Centreline (m)		
				PNA	PNA-SMR	PNA-BB
29	BSR	1968	1 standing lodgepole pine with a rectangular barkstrip scar. On a trail that runs across a tested area of high archaeological potential; all shovel tests negative.	>500	22	>500
30	Unknown	Unknown	1 axe-cut blazed standing lodgepole Pine tree located on a worn trail.	>500	55	>5,000
32	BSR/BS/BSO	Unknown	1 cambium-stripped standing lodgepole pine, with a rectangular scar and two oval blazes. 1 standing tree in a previously harvested forestry cutblock; blazes on east and west sides of tree.	27	27	27
33	BSO	Unknown	1 standing lodgepole pine with two oval blazes. 2 more blazed trees outside proposed transmission line; approximately linear alignment suggests association with forestry practice.	42	42	42
38	BSL	Unknown	3 bark- stripped lodgepole pine. Approximate linear alignment suggests association with forestry practice.	113	113	113

CHR#	Type ¹	Year Modified ^{2,3}	Comments	Distance from Centreline (m)		
				PNA	PNA-SMR	PNA-BB
40	Unknown	Unknown	1 box trap. Recent trap, located on tree; lure (fish) still on wire inside trap.	0	0	0
42	Unknown	Post 1978	1 shaped spruce. Increment core indicates modification date after 1978.	26	26	26
43	BSL	Unknown	1 lodgepole pine with lenticular barkstrip scarring. Located at base of a steep slope; advanced state of decay precluded dating.	18	18	18
44	BS/BSL/BSO	Unknown	8 standing and 1 fallen dead barkstripped lodgepole pine. Advanced state of decay precluded dating.	0	0	0
45	BST	1945	2 spruce trees with triangular barkstrip scars. Two trees within 5 m of each other; 1 with 2 scar faces. Attempts were made to date both trees; one tree yielded a modification date of 1945.	34	34	34

¹ BSO: Barked Stripped Oval, BSD: Bark Stripped Diamond, BSL: Bark Stripped Lenticular, BLO: Blaze Oval.

7.3 Known Spiritual Sites

Subject to further consultation with Aboriginal Groups, there are no known spiritual resources within the mine site. Known sites located outside the mine site are described below.

7.3.1 Mount Davidson and Tsacha Mountain

Mount Davidson and Tsacha Mountain are located to the south of the mine site, both mountains are collectively referred to as *Ts'oodenla*, which means “‘sounds like two mountains together’ or ‘something piled up like a mountain’” (Keefer Ecological Services 2019). The mountains hold traditional healing powers for Aboriginal Groups in the region. The area is also used for hunting and gathering of medicinal plants and berries (Keefer Ecological Services 2019; ERM 2016).

7.3.2 Tatelkuz Lake

Tatelkuz Lake was used by Aboriginal Groups for ceremonial purposes and the cremation of family members. Cremated remains were carried by relatives for a year and then scattered in this area. Berries and medicinal plants are also collected on the south and south-east sides of the Lake (ERM 2016).

7.3.3 Kuyakuz Mountain and Kuyakuz Lake

Kuyakuz (also referred to as K'ai k'uz) Mountain and Kuyakuz Lake are located to the east of the mine site. Kuyakuz Mountain is a sacred crematory mountain with sacred sites and burials near Kuyakuz Lake (Keefer Ecological Services 2019).

7.4 Known Paleontological Sites

There are no known palaeontological sites within the mine site and three known paleontological sites within 150 m from proposed transmission line routes (Table 7.3-1).

Table 7.3-1: Paleontological Sites within 150 m of the Centreline of the Proposed Transmission Line Routes

Paleontological Resources	Fossil Type	Distance from Centreline (m)		
		PNA	PNA-SMR	PNA-BB
C-143722	Ammonids, bivalves, gastropods, ichnofossil	71	71	>500
C-177438	Ichthyoliths, gastropod, bivalves	52	52	>500
C-203467	Bivalves, plant	36	36	>500

8. PROTECTION MEASURES

Avoidance of cultural heritage sites is always the preferred option. If avoidance is not feasible then the effects of the Project will be minimized through the implementation of the measures discussed below. If known archaeological sites protected under the *Heritage Conservation Act* are impacted without mitigation measures carried out in advance under a *Heritage Conservation Act* permit then penalties may be levied in accordance with applicable law.

8.1 Known Sites

8.1.1 Archaeological Sites

There are known archaeological sites within the mine site and within 150 m of the proposed transmission line routes (Section 7.1). The following measures will be undertaken for Project activities located within 0 to 50 metres (m) of a known site:

- Flag or delineate an area of at least 50 m around the site and mark as a “No Work Zone” from the site boundary to align with Archaeology Branch’s Remote Access to Archaeological Data areas of high archaeological potential.
- Construction monitoring (Section 10.1.1) in the area of the site.
- If the site is impacted, the EM contacts the Project archaeologist to determine what additional mitigation measures are required. Discussions on mitigation measures will be in consultation with the BC Archaeology Branch and affected Aboriginal Groups in accordance with the *Heritage Conservation Act* permit.
- If the site cannot be avoided then mitigation must be conducted prior to impact. Procedures to record, analyse and mitigate effects on a site will be determined in consultation with the BC Archaeology Branch and affected Aboriginal Groups as per the *Heritage Conservation Act* permit and carried out by an archaeologist under a *Heritage Conservation Act* (Section 12.2 heritage investigation and/or Section 12.4 site alteration permits). Mitigation measures will depend on the specifics of the archaeological site and the levels of impact. Mitigations generally involve detailed mapping, photography, and systematic data recovery through surface collection and controlled excavations of evaluative units if subsurface deposits are present (Note: Where applicable, post-1846 CMTs are not protected, and any mitigations would not be covered by the scope of a *Heritage Conservation Act* permit).
- Any artifacts collected during archaeological assessment will be sent to the Exploration Place Museum and Science Centre in Prince George, BC or another approved repository identified in the relevant Section 12.2 or 12.4 permit under the *Heritage Conservation Act*.

The following measures will be taken for Project activities located within 50 and 150 m of a known site:

- Flag or delineate an area of at least 50 m around the site boundary and mark as a “No Work Zone”.
- Annual monitoring (Section 10.1.2) of the site.
- If impacts on archaeological sites have occurred mitigation measures will be required.
- Any artifacts recovered from an archaeological context will be submitted to an Archaeology Branch approved repository as identified in the application submitted for Permit 2021-0322, and any later permits issued under Sections 12.2 or 12.4 of the *Heritage Conservation Act* prior to the completion of the *Heritage Conservation Act* permit reporting.

8.1.2 Historic Site

There is one documented historic cabin site within the mine site (Section 7.2; Figure 7-1). If avoidance is not possible, and artifacts or features associated with this site will be impacted, Aboriginal Groups and the local museum will be consulted and given the opportunity to collect/preserve artifacts associated with this site.

8.1.3 Culturally Modified Tree Sites

There are known post-1846 CMT sites within the mine site and along the proposed transmission line routes that may be impacted by Project infrastructure (Section 7.2; Figure 7-1). Prior to alteration to post-1846 CMTs the relevant/affected Aboriginal Groups will be consulted to determine, if necessary, the preferred mitigation measures. Common mitigation measures for post-1846 CMTs with cultural significance include: detailed measurements and photography, removing and preserving the modified portion of the tree, or removing a cross-section (cookie) of the modified portion of the tree. These measures allow for the preservation of some or all of the information about the modification(s) made to the tree.

8.1.4 Trails

There are known trails located along the proposed transmission line routes. Prior to the alteration of a trail the relevant/affected Indigenous communities will be consulted to determine, if necessary, the preferred mitigation measures. Possible mitigation measures for recording trails include photography and detailed mapping of the route and surrounding features.

8.1.5 Paleontological Sites

There are no known paleontological sites located within the mine site and three palaeontological sites within 150 m of the proposed transmission line routes (Section 7.3; Figure 7-2). A preliminary Fossil Impact Assessment will be conducted prior to construction to determine if additional studies are required. If palaeontological materials are recovered the BC Fossil Management Office will be consulted to determine an appropriate repository.

8.2 As-yet Unknown Sites

Archaeological assessments will be conducted in areas that fall outside of areas covered by the AIA (AMEC 2013) prior to construction in that area. Indigenous representatives and/or Indigenous Knowledge Holders from the affected Aboriginal Groups will be invited to be involved, and/or, identify representatives who will be involved, in the assessment.

Pursuant to Heritage Inspection Permit 2021-0322, an AIA is being undertaken for the portion of the transmission line alignment that has not yet been surveyed due to changes made to the alignment during the environmental assessment in response to Indigenous concerns. The methodology for Permit 2021-0322 was developed in consultation with the LDN, UFN, and CSFN. As required by DS Condition 7.1, BW Gold shall develop, prior to construction and in consultation with Indigenous groups, and implement an AIA of the footprints of the final transmission line alignment and associated poles, roads and towers to help inform final placement of these features. The AIA will take into account British Columbia's Archaeological Impact Assessment Guidelines (Archaeology Branch 1998). Measures identified in Section 8 of this plan will be implemented to protect heritage resources identified within the footprint of the final transmission line alignment. This plan will be updated to incorporate the 2021 AIA results. Any artifacts collected during the assessment will be sent to the Exploration Place Museum and Science Centre in Prince George, BC.

A Chance Find Procedure and reporting form is provided in Appendix C.

Agreements respecting Indigenous customs and protocols for the identification, handling, recognition, recording, and safekeeping of as-yet unknown intangible cultural and spiritual heritage sites and confidentiality will be developed and in place prior to the commencement of Project construction.

8.3 Confidentiality

BW Gold will consult Indigenous groups on the manner by which to protect the confidentiality of a discovery, consistent with provincial laws. Confidentiality will be assessed in consultation with Indigenous Groups on a case-by-case basis, and contents of discoveries will be treated as confidential among BW Gold, the Indigenous Group(s) within whose traditional territory the find is made, the Archaeology Branch and the archaeologist until agreed otherwise. BW Gold understands that Indigenous groups retain rights to their knowledge, practices, and traditions, and how it is shared with others. Therefore, Indigenous Knowledge information will be gathered under confidentiality agreements which address the following:

- the roles and responsibilities of each party;
- conditions on sharing confidential Indigenous knowledge with other parties;
- limitations on who can access the Indigenous knowledge provided;
- how, where, and by whom the Indigenous knowledge would be stored, and for how long;
- any disposal procedures, including timing considerations for disposal;
- whether a non-confidential summary or redacted version of the Indigenous knowledge could be created and shared with the public;
- how the Indigenous knowledge should be reflected in reporting; and
- whether and how the Indigenous knowledge could be used in monitoring and follow-up programs.

If a cultural or spiritual site is identified as confidential by Indigenous groups, an area of at least 50 metres around the site will be flagged and depicted on Project maps and marked as a “No Work Zone” from the site boundary.

9. PROCESS FOR IDENTIFICATION OF CULTURAL AND SPIRITUAL AREAS OF IMPORTANCE

BW Gold consulted with Aboriginal Groups regarding spiritual sites and other areas of cultural importance during the EA. Known sites identified to BW Gold during and subsequent to the project's environmental assessment as described in Section 7 will form the basis of the discussion. Cultural or spiritual resources identified during consultation as part of Condition 15 will be considered in implementation of this plan as appropriate.

BW Gold will continue to engage with Aboriginal Groups on implementation of this plan. As part of plan implementation, BW Gold will communicate to Aboriginal Groups on any new construction areas proposed for the year. This communication may be aligned with other required processes. As part of this annual engagement, BW Gold will:

- Use maps to describe the new construction areas, including the location of infrastructure and activities, any known cultural or spiritual sites and anticipated effects.
- Ask Aboriginal Groups if they are aware of any additional cultural or heritage sites that could be affected by the annual construction program.
- If any additional cultural or spiritual sites are identified as potentially affected by the annual construction program, ask the Aboriginal Groups to:
 - identify and describe the cultural or spiritual site;
 - if feasible locate the resource on a map;
 - if impacted by the Project, discuss mitigation(s); and
 - provide opportunities for Indigenous Knowledge Holders to communicate on the site(s) and potential mitigation, if requested by the Aboriginal Group.
- After this information has been gathered and mapped:
 - the Aboriginal Group will be asked to verify that the information has been correctly understood;
 - review the potential effects of the Project on the site and mitigations; and
 - discuss measures to keep information on the sites confidential if requested by the Aboriginal Group.
- With the consent of the respective Aboriginal Group and participation of Indigenous Knowledge Holders, BW Gold will visit and document the cultural or spiritual area(s).
- BW Gold will provide a summary report to the appropriate Aboriginal Group to confirm measures to keep the site location and site information confidential.

10. IMPLEMENTATION

The CSMP will be implemented during the Construction, Operations and Closure phases. The CSMP will be provided to the Agency and Indigenous groups prior to construction. Known and as-yet unknown sites (as identified by the chance find procedure) potentially affected by Project activities will be monitored as described in Section 10.1. Monitoring records will be maintained and reporting will be conducted as described in Section 11. Indigenous group representatives and/or Indigenous Knowledge Holders will be invited to be involved, and/or, identify representatives who will be involved, in the implementation of the CSMP.

The following procedure will be followed to provide written reports:

- A written notice will be provided that:
 - includes a copy of the plan, program or other document including a summary written in plain language;
 - invites the party to provide its views on the content of such plan, program or other document; and indicates if there is a timeframe (no less than 15 days) for providing their views so that the party may provide such views to the Holder within such time frame;
 - undertakes a full and impartial consideration of any views and other information provided by a party.
- Following receipt of views or comment on the provided document a response will be prepared to:
 - provide a written explanation of how the views and information provided have been considered and addressed in a revised version of the plan, program or other document; or why the views and/or information provided have not been addressed in a revised version of the plan, program, or other document. Where views diverge, BW Gold will strive to reach consensus with Indigenous groups on implementation of the plan. The written explanation will be provided within 15 days unless otherwise agreed between BW Gold and the Aboriginal Groups;
 - maintain a record of consultation with each such party regarding the plan, program, or other document; and
 - provide a copy of such consultation record to the EAO, the relevant party, or both, promptly upon written request. The copy of such consultation record will be provided to the EAO, relevant party, or both, no later than 15 days after the Holder receives the request for a copy of the consultation record, unless otherwise authorized by the EAO.

10.1 Monitoring

Heritage sites within 150 m of the Project footprint will be marked on Project site maps a “No Work Zone” and an area of 50 m flagged or delineated around the site boundary (Section 8.1). Sites within 50 m of Project activities will be subject to Construction Monitoring and sites located 50 to 150 m will be subject to Annual Monitoring.

10.1.1 Construction Monitoring

Sites within 50 m of Project activities will be flagged as “No Work Zones” on the ground and monitored by the EM and Aboriginal Monitors during construction in the vicinity of the site, including construction during the phased increases to the mill nameplate throughput. Should impacts be anticipated, or found within 50 m of a site, Aboriginal Groups and the Project Archaeologist will be contacted immediately to

determine if additional mitigation measures are required prior to the impact. The EM will be engaged on the proposed mitigation measures.

Sites that are identified by Aboriginal Groups as confidential will be depicted as polygons, including an area of at least 50 m around the site, on project maps and marked as a “No Work Zones” around the site but will not be delineated on the ground. These sites will be monitored by the EM and Aboriginal Monitors during construction in the vicinity of the site, including construction during the phased increases to the mill nameplate throughput.

10.1.2 Annual Monitoring

For the life of the Project the EM and Aboriginal Monitors will, on an annual basis, verify that known heritage sites remain intact and are not impacted by the Project and check the condition of site protection (i.e., flagging or fencing). Should impacts be observed at sites, the Project Archaeologist (if there is a current Heritage Inspection Permit) and the Archaeology Branch will be contacted to determine mitigation measures. Should impacts be observed at heritage sites, the EM will contact Indigenous Knowledge Holder(s) to discuss mitigation measures.

10.2 Site Access for Cultural and Spiritual Purposes

Access will be provided to Indigenous groups during all phases of the Project to the mine site for cultural purposes or for exercising Aboriginal rights, to the extent that such access and exercise of rights are safe.

In accordance with DS Condition 7.3, access will be provided within 24 hours of an access request being received, unless access is not possible for safety reasons, BW Gold will respond to all requests for access within 12 hours of receipt. Access requests must be provided to BW Gold in writing, and must include the date and time of requested access, location(s) to be visited, support requested while on site, duration of requested access, number of people accessing the site and any other information that would support BW in determining whether access can be safely provided. BW Gold may be unable to provide access within 24 hours where incomplete access requests are received. Providing BW Gold with advanced warning of access requests (i.e., 7 days) will allow BW Gold to consider the request, plan, and increase the likelihood that access can be granted.

11. REPORTING AND RECORD KEEPING

11.1 Reporting

Reporting will comply with the *Heritage Conservation Act* permitting conditions and the Chance Find Procedure (Appendix C). Final permit reporting required under the *Heritage Conservation Act* will be submitted to the Archaeology Branch and Aboriginal groups by the Project archaeologist on, or before, the permit expiry. Site forms will be submitted by the Project archaeologist within 6 weeks of the completion of site investigations. Interim reports will be submitted to the Archaeology Branch on an as required basis to provide management recommendations. The process for reporting information related to archaeological and cultural heritage resources to impacted communities will be informed by agreements with Aboriginal Groups, where they are in place. Reports will be provided in electronic format (MS Word or PDF) and via email. Records will be kept on file with the site EM as described in Section 11.2.

11.1.1 Federal Decision Statement

Conditions 2.11, 2.12, and 2.13 set out the annual reporting requirements related to the implementation of conditions in the DS.

Draft annual reports will be provided to Indigenous groups, no later than June 30 following the reporting year to which the annual report applies. BW Gold will consult Indigenous groups on the content and findings in the draft annual report. In consideration of any comments received from Indigenous groups, BW Gold will revise and submit to the Agency and Indigenous groups a final annual report, including an executive summary in both official languages, no later than September 30 following the reporting year to which the annual report applies.

11.1.2 Environmental Assessment Certificate

Condition 5 of the EAC sets out reporting requirements. BW Gold will submit a report to the attention of the EAO and Aboriginal Groups on the status of compliance with the EAC at the following times:

- a. at least 30 days prior to the start of Construction;
- b. on or before March 31 in each year after the start of Construction;
- c. at least 30 days prior to the start of Operations;
- d. on or before March 31 in each year after the start of Operations;
- e. at least 30 days prior to the start of Closure;
- f. on or before March 31 in each year after the start of Closure until the end of Closure;
- g. at least 30 days prior to the start of Post-Closure; and
- h. on or before March 31 in each year after the start of Post-Closure until the end of Post-Closure.

BW Gold will submit reports to the EAO and Aboriginal Groups within the timelines specified in Condition 5 of the EAC #M19-01. The reports will report on status of compliance with the Project's EAC.

11.1.3 Annual Report

A record of monitoring activities will be kept and the information will be summarized in an Annual Monitoring Report. This report will include the results of monitoring conducted during the preceding year, any new sites identified, incidents where mitigation measures failed to protect heritage sites, and any resulting actions or mitigations undertaken and the results of those actions or mitigations. This report will

be provided to the Project Archaeologist and affected Aboriginal Groups. The relevant information including Chance Finds will also be provided to the Archaeology Branch in reports required under Sections 12.2 and/or 12.4 of the *Heritage Conservation Act*. The EM, Project Archaeologist and/or Aboriginal Monitors will document by means of photographs and field notes, the type of construction and disturbance occurring near a site, weather conditions, personnel present, and/or other details. It is imperative that the following data be collected during Construction and Annual monitoring as information gathered may be required for inclusion in compliance reports:

- site photographs;
- coordinates for any disturbances;
- details of any actions taken to protect the sites;
- information received from Aboriginal Groups on handling and storage of finds in consideration of any laws, customs or protocols; and
- recommendations for any changes to the protective measures, if required.

11.2 Record Keeping

The EM is responsible for Project data management and reporting related to heritage resources. The data management system will include the results from monitoring activities (Section 10.1), Chance Finds, AIAs, No Work Zones established, and consultation with Indigenous groups. The data management system will also record when the results have been provided to appropriate parties as required. The EM will also report chance finds to the Project Archaeologist and Aboriginal Groups within 24 hours of the discovery. The Project Archaeologist will report chance finds to the Archaeology Branch.

Monitoring data will be entered into an electronic database and have quality control checks completed upon receipt of results. Data will be entered into a standard format that allows for data reporting and analyses. Data and data comparisons will be stored in a single file format for each type of survey or monitoring activity. Monitoring data will be stored for the life of the mine and will be made available for review upon request.

12. EVALUATION AND ADAPTIVE MANAGEMENT

BW Gold will undertake monitoring during the Construction and Operations phases (infrastructure expansions to support increases to mill throughput) and annually. Monitoring will assess the effectiveness of the protection measures for known resources and the implementation of the Chance Find Procedure. If unforeseen impacts to heritage sites occur they will be immediately reported to the Project archaeologist and Indigenous groups and reviewed. Unforeseen impacts to heritage sites will be indicative of a lack of effectiveness of the protection measure and the Chance Find procedure. Based on the review, protection measures and the Chance Find Procedure will be modified within 4 weeks. The CSMP will be updated to reflect the changes and communicated as per Section 11. Monitoring identified in Section 10.1.1 and 10.1.2 will be used to determine if altered or new mitigation measures are effectively mitigating effects or avoiding potential effects.

13. PLAN REVISION

Input and revisions provided by Aboriginal Groups, EMPR, ENV and FLNRORD will be considered for inclusion and incorporation and addressed in future versions of the CSMP as they become available. BW Gold may revise the CSMP by providing the proposed revisions to Aboriginal Groups, EMPR, ENV and FLNRORD for comment at least of 30 days prior to submitting the revised CSMP to the EAO, unless otherwise authorized by the EAO. Revised plans will also be provided to the Impact Assessment Agency of Canada and Indigenous groups.

14. QUALIFIED PERSON OR QUALIFIED PROFESSIONAL

The process for selecting the qualified person to prepare the CSMP considered their training, experience and familiarity with the Project's environmental assessment. This management plan has been prepared and reviewed by, or under the direct supervision of, the following qualified person or qualified professionals:

Prepared by:



David Le Beau, MA
Archaeologist
Consultant II, ERM

Reviewed by:



Dan Walker, Consulting Archaeologist
Principal Consultant, ERM

15. REFERENCES

Definitions of the acronyms and abbreviations used in this reference list can be found in the Acronyms and Abbreviations section.

Legislation

Coroners Act, SBC 2007, c 15.

Cremation, Interment and Funeral Services Act, SBC 2004, c 35

Declaration on the Rights of Indigenous Peoples Act, SBC 2019, c 44.

Environmental Assessment Act, SBC 2018, c 51.

Forest and Range Practices Act, SBC 2002, c 69.

Forest Planning and Practices Regulation, BC Reg 14/2004.

Freedom of Information and Protection of Privacy Act, RSBC 1996, c 165.

Fossil Definition Regulation, BC Reg 214/2011

Heritage Conservation Act, RSBC 1996, c 187.

Impact Assessment Act, SC 2019, c 28.

Land Act, RSBC 1996, c 245.

Local Government Act, RSBC 1996, c 323.

Mineral Tenure Act, RSBC 1996, c 292.

Mineral Definition Modification Regulation, BC Reg 5/2005.

Mines Act, RSBC 1996, c 293.

United Nations Declaration on the Rights of Indigenous Peoples Act, SC 2021, c 14.

Wildlife Act, SBC 1996, c 31.

Secondary

N.d. *BC Fossil Management Framework*. Electronic document. Province of British Columbia.

AMEC Environment & Infrastructure (AMEC). 2013. *Blackwater Gold Project 2013 Baseline Report Archaeology*. Prepared for New Gold Inc. by AMEC Environment & Infrastructure. Burnaby. British Columbia, Canada.

AMEC Foster Wheeler Environment & Infrastructure (AMEC). 2017. *New Gold – Blackwater Gold Project. Archaeological Impact Assessment Permit Report 2012-0295*. Prepared for New Gold Inc. by AMEC Foster Wheeler Environment & Infrastructure. Burnaby, British Columbia. Canada.

Archaeology Branch. 1998. *British Columbia Archaeological Impact Assessment Guidelines*. Electronic document: [archaeological impact assessment guidelines.pdf \(gov.bc.ca\)](https://www2.gov.bc.ca/gov/content/soc/culture/archaeology/impact_assessment_guidelines.pdf)

BC EAO. 2019a. *Assessment Report for Blackwater Gold Mine Project (Blackwater) With respect to the Application by New Gold Inc. for an Environmental Assessment Certificate pursuant to the Environmental Assessment Act, S.B.C. 2002, c.43*. Prepared by the Environmental Assessment Office. May 17, 2019.

- BC EAO. 2019b. *Summary Assessment Report for Blackwater Gold Mine Project (Blackwater) With respect to the application by New Gold Inc. for an Environmental Assessment Certificate pursuant to the Environmental Assessment Act, S.B.C. 2002, c. 43.*
- BC EAO. 2019c. *In the matter of the Environmental Assessment Act S.B.C. 2002, c. 43 (the Act) and in the matter of an Application for an Environmental Assessment Certificate (Application) by New Gold Inc. (Proponent) for the Blackwater Gold Project Environmental Assessment Certificate #M19-01.*
- CEA Agency. 2015. Technical Guidance for Assessing Physical and Cultural Heritage or any Structure, Site or Thing. Government of Canada.
- CEA Agency. 2019. *Decision Statement Issued under Section 54 of the Canadian Environmental Assessment Act, 2012* to New Gold Inc. c/o Ryan Todd, Director, Blackwater Project Sunlife Plaza Suite 610, 1100 Melville Street Vancouver, British Columbia V6E 4A6 for the Blackwater Gold Project.
- EMLI. 2021. *Health, Safety and Reclamation Code for Mines in British Columbia.*
- ERM. 2016. *Blackwater Gold Project: Further Assessment of Potential Effects on Current Aboriginal Use.* Prepared for New Gold Inc. by ERM Consultants Canada Ltd.: Vancouver, BC.
- Furniss, E. 2004. The Carrier Indian and the Politics of History. In E.R. Wilson, *Native Peoples: The Canadian Experience*. Toronto: Oxford University Press, 198–222.
- Keefer Ecological Services Ltd. 2019. Ulkatcho First Nation and Lhoosk'uz Dené Nation: Part C Blackwater Gold Mine Project.

APPENDIX A CONCORDANCE WITH ENVIRONMENTAL ASSESSMENT CERTIFICATE #M19-01 (JUNE 21, 2019)

Table A-1: Environmental Assessment Certificate #M19-01 Conditions and Location in the Cultural and Spiritual Resources Management Plan

Condition #	Requirement	Location in Plan
2 (Plan Development)	Where a condition of this Certificate requires the Holder to develop a plan, program or other document, any such plan, program or other document must, at a minimum, include the following information: a) purpose and objectives of the plan, program or other document;	Section 2.0
	b) roles and responsibilities of the Holder and Employees;	Section 3, Table 3-1
	c) names and, if applicable, professional certifications and professional stamps/seals, of those responsible for the preparation of the plan, program, or other document;	Section 14
	d) schedule for implementing the plan, program or other document throughout the relevant Project phases;	Section 10
	e) means by which the effectiveness of the mitigation measures will be evaluated including the schedule for evaluating effectiveness;	Section 12
	g) schedules and methods for the submission of reporting to specific agencies, Aboriginal Groups and the public and the required form and content of those reports; and process and timing for updating and revising the plan, program or other document, including any consultation with agencies and Aboriginal Groups that would occur in connection with such updates and revisions.	Section 11.1
3 (Adaptive Management)	Where a condition of this Certificate requires the Holder to develop a plan, program or other document that includes monitoring, including monitoring of mitigation measures or monitoring to determine the effectiveness of the mitigation measures, the Holder must include adaptive management in that plan. The objective of the adaptive management is to address the circumstances that will require the Holder to implement alternate or additional mitigation measures to address effects of the Project if the monitoring shows that those effects: a) are not mitigated to the extent contemplated in the Application; b) are not predicted in the Application; or c) have exceeded the triggers identified in paragraph g) of this condition.	Sections 5, 12
	The adaptive management in the plan must include at least the following: d) the monitoring program that will be used including methods, location, frequency, timing and duration of the monitoring;	Sections 10.1.1 and 10.1.2
	e) the baseline information that will be used, or collected where existing baseline information is insufficient, to support the monitoring program;	Section 7 and 8
	f) the scope, content and frequency of reporting of the monitoring results;	Section 11
	g) the identification of qualitative and quantitative triggers, which, when observed through monitoring required under paragraph d), will require the Holder to alter existing, or develop new, mitigation measures to avoid, reduce, and/or remediate effects;	Section 12
	h) the methods that will be applied to detect when a numeric trigger, or type or level of change referred to in paragraph g), has occurred;	Section 12
	i) a description of the process for and timing to alter existing mitigation measures or develop new mitigation measures to reduce or avoid effects;	Section 12

Condition #	Requirement	Location in Plan
	j) identification of the new and/or altered mitigation measures that will be applied when any of the changes identified in paragraphs a) to c) occur, or the process by which those will be established and updated over the relevant timeframe for the specific condition;	Section 12
	k) the monitoring program that will be used to determine if the altered or new mitigation measures and/or remediation activities are effectively mitigating or remediating the effects and or avoiding potential effects; and	Section 12
	l) the scope, content and frequency of reporting on the implementation of altered or new mitigation measures.	Section 11 and 12
	If there are any requirements or mitigation measures required in the plan, program or other document for which adaptive management, or elements of adaptive management listed in paragraphs d) to l) are assessed to be not appropriate or applicable, the plan must include identification of those requirements and measures, and the rationale for that assessment.	Noted
4 (Consultation)	<p>Where a condition of this Certificate requires the Holder consult a particular party or parties regarding the content of a plan, program or other document, the Holder must, to the satisfaction of the EAO:</p> <p>a) provide written notice to each such party that:</p> <ul style="list-style-type: none"> i) includes a copy of the plan, program or other document; ii) invites the party to provide its views on the content of such plan, program or other document; and iii) indicates: i. if a timeframe for providing such views to the Holder is specified in the relevant condition of this Certificate, that the party may provide such views to the Holder within such time frame; or ii. if a timeframe for providing such views to the Holder is not specified in the relevant condition of this Certificate, specifies a reasonable period during which the party may submit such views to the Holder; <p>b) undertake a full and impartial consideration of any views and other information provided by a party in accordance with the timelines specified in a notice given pursuant to paragraph (a);</p> <p>c) provide a written explanation to each such party that provided comments in accordance with a notice given pursuant to paragraph (a) as to: i) how the views and information provided by such party to the Holder have been considered and addressed in a revised version of the plan, program or other document; or ii) why such views and information have not been addressed in a revised version of the plan, program or other document;</p> <p>d) maintain a record of consultation with each such party regarding the plan, program or other document; and</p> <p>e) provide a copy of such consultation record to the EAO, the relevant party, or both, promptly upon the written request of the EAO or such party. The copy of such consultation record must be provided to the EAO, relevant party, or both, no later than 15 days after the Holder receives the request for a copy of the consultation record, unless otherwise authorized by the EAO.</p>	In progress

Condition #	Requirement	Location in Plan
18 (Cultural and Spiritual Resources Management Plan)	The Holder must retain a Qualified Person to develop a Cultural and Spiritual Resources Management Plan for the Construction, Operations and Closure phases. The plan must be developed in consultation with Aboriginal Groups, EMPR, ENV and FLNRORD. The plan must include at least the following: a) the types of historic, cultural and spiritual resources that will be addressed by the plan, including resources that are of cultural or spiritual significance to the Aboriginal Groups who may have cultural and/or spiritual resources in the Project Area;	Section 2.0, 7 and 14
	b) the process by which a Qualified Person is selected;	Section 14
	c) how the Holder will consult and work with Aboriginal Groups to identify areas of cultural or spiritual importance that may be affected by the Project, and to determine whether the areas can be protected from impacts, or whether relocation of features of importance or activities under Condition 15 (Indigenous Cultural Awareness and Recognition) are needed to address effects;	Section 9
	d) chance find procedure that must include: i) mitigation measures to avoid or reduce adverse effects to chance finds; ii) training for Employees; iii) means and protocols for notifying Aboriginal Groups of finds, including maintenance of up to date contact lists for Aboriginal Groups; iv) means and protocols for involving Aboriginal Groups in the assessment of finds; and v) the means by which the Holder will document and make available to the relevant authorities any information the Holder has received from Aboriginal Groups on handling and storage of finds in consideration of any laws, customs or protocols identified by the Aboriginal Groups;	Section 6, 11, 12, 13, Appendix C
	e) the means by which the Holder will keep confidential any sensitive cultural, spiritual and/or site-specific information that the Aboriginal Groups have advised the Holder is considered confidential;	Section 8.3
	f) the means by which the Holder will document the consultation in paragraph (c) with Aboriginal Groups and identify and implement measures in a manner that does not reveal confidential information on sites identified in paragraph e);	Section 8.3, 9
	g) the means by which representatives and/or traditional knowledge holders from Aboriginal Groups will be involved in the implementation of the plan; and	Section 8.2, 10
	h) a procedure for providing written reports to Aboriginal Groups on the implementation of this plan, including provision of a summary written in plain language.	Section 11
	The Holder must provide the draft plan that was developed in consultation with EMPR, FLNRORD, ENV and Aboriginal Groups to EMPR, FLNRORD, ENV, Aboriginal Groups and the EAO for review a minimum of 90 days prior to the planned commencement of Construction, or as listed in the Document Submission Plan required by Condition 10 of this Certificate.	In progress
	The Holder must not commence Construction until the plan has been approved by the EAO, unless otherwise authorized by the EAO.	Noted

APPENDIX B CONCORDANCE WITH FEDERAL DECISION STATEMENT (APRIL 15, 2019)

Table B-1. Federal Environmental Assessment Decision Statement Conditions and Location in the Cultural and Spiritual Resources Management Plan

Condition	Requirement	Location in Plan
2.1 (General Conditions)	The Proponent shall ensure that its actions in meeting the conditions set out in this Decision Statement during all phases of the Designated Project are considered in a careful and precautionary manner, promote sustainable development, are informed by the best information and knowledge available at the time the Proponent takes action (including community and Indigenous traditional knowledge), are based on methods and models that are recognized by standard-setting bodies, are undertaken by qualified individuals, and have applied the best available economically and technically feasible technologies.	Section 8, 9
2.2 (General Conditions)	The Proponent shall, when mitigation is a requirement of a condition set out in this Decision Statement, give preference to avoiding the adverse environmental effect of the Designated Project over minimizing the adverse environmental effect of the Designated Project. If unable to avoid the adverse environmental effect, the Proponent shall give preference to minimizing the adverse environmental effect of the Designated Project over compensating for the adverse environmental effect of the Designated Project. If unable to minimize the adverse environmental effect, the Proponent shall compensate for the adverse environmental effect of the Designated Project.	Section 8
2.3 (General Conditions)	<p>The Proponent shall, where consultation is a requirement of a condition set out in this Decision Statement:</p> <p>2.3.1 provide a written notice of the opportunity for the party or parties being consulted to present their views and information on the subject of the consultation;</p> <p>2.3.2 provide all information available and relevant on the scope and the subject matter of the consultation and a period of time agreed upon with the party or parties being consulted, not less than 15 days, to prepare their views and information;</p> <p>2.3.3 undertake a full and impartial consideration of all views and information presented by the party or parties being consulted on the subject matter of the consultation;</p> <p>2.3.4 strive to reach consensus with Indigenous groups; and</p> <p>2.3.5 advise the party or parties being consulted on how the views and information received have been considered by the Proponent including a rationale for why the views have, or have not, been integrated. The Proponent shall advise the party or parties in a time period that does not exceed the period of time taken in 2.3.2.</p>	Section 10 In progress
2.4 (Consultation)	<p>The Proponent shall, where consultation with Indigenous groups is a requirement of a condition set out in this Decision Statement, determine and strive to reach consensus with each Indigenous group regarding the manner by which to satisfy the consultation requirements referred to in condition 2.3, including:</p> <p>2.4.1 the methods of notification;</p> <p>2.4.2 the type of information and the period of time to be provided when seeking input;</p> <p>2.4.3 the process to be used by the Proponent to undertake impartial consideration of all views and information presented on the subject of the consultation; and</p> <p>2.4.4 the period of time and the means by which to advise Indigenous groups of how their views and information were considered by the Proponent.</p>	Section 10, In progress

Condition	Requirement	Location in Plan
2.11 (Annual Reporting)	<p>The Proponent shall, commencing in the reporting year during which the Proponent begins the implementation of the conditions set out in this Decision Statement, prepare an annual report that sets out:</p> <p>2.11.1 the activities undertaken by the Proponent in the reporting year to comply with each of the conditions set out in this Decision Statement;</p> <p>2.11.2 how the Proponent complied with condition 2.1;</p> <p>2.11.3 for conditions set out in this Decision Statement for which consultation is a requirement, how the Proponent considered any views and information that the Proponent received during or as a result of the consultation, including a rationale for how the views have, or have not, been integrated;</p> <p>2.11.4 the information referred to in conditions 2.5 and 2.6 for each follow-up program;</p> <p>2.11.5 the results of the follow-up program requirements identified in conditions 3.14, 3.15, 3.16, 4.5, 5.5, 6.11, 6.12, 6.13, 6.14, 8.18.6, 8.20.5, 8.21, and 8.22 if required;</p> <p>2.11.4 any update made to any follow-up program in the reporting year;</p> <p>2.11.7 any modified or additional mitigation measures implemented or proposed to be implemented by the Proponent, as determined under condition 2.9 and rationale for why mitigation measures were selected pursuant to condition 2.5.4; and</p> <p>2.11.8 any change(s) to the Designated Project in the reporting year.</p>	Section 11, 12
2.12 (Annual Reporting)	The Proponent shall provide a draft annual report referred to in condition 2.11 to Indigenous groups, no later than June 30 following the reporting year to which the annual report applies. The Proponent shall consult Indigenous groups on the content and findings in the draft annual report.	Section 11.1.1
2.13 (Annual Reporting)	The Proponent, in consideration of any comments received from Indigenous groups pursuant to condition, 2.12 shall revise and submit to the Agency and Indigenous groups a final annual report, including an executive summary in both official languages, no later than September 30 following the reporting year to which the annual report applies.	Section 11.1.1
2.15 (Information Sharing)	When the development of any plan is a requirement of a condition set out in this Decision Statement, the Proponent shall submit the plan to the Agency and to Indigenous groups prior to construction, unless otherwise required through the condition.	Section 11.1.1
7.1	The Proponent shall develop, prior to construction and in consultation with Indigenous groups, and implement an archaeological impact assessment of the footprints of the final transmission line alignment and associated poles, roads and towers to help inform final placement of these features. The Proponent shall take into account British Columbia's Archaeological Impact Assessment Guidelines when developing and implementing the archaeological impact assessment. The Proponent shall apply the archaeological and heritage management plan pursuant to condition 7.2 to structures, sites, or things of historical, archaeological, paleontological, or architectural significance or physical or cultural heritage resources discovered within the footprint of the final transmission line alignment.	Section 8.2
7.2	The Proponent shall have a Qualified Professional develop, prior to construction and in consultation with Indigenous groups and relevant authorities, and implement, during construction, operation and	Sections 8.1.1, 8.3 and 9

Condition	Requirement	Location in Plan
	decommissioning, an archaeological and heritage management plan for any structures, sites, or things of historical, archaeological, paleontological, or architectural significance or physical or cultural heritage resources within the Designated Project area. The archaeological resources and heritage management plan shall include: 7.2.1 protocols to respect the discovery, handling, recognition, recording, transferring and safekeeping of structures, sites or things of historical, archaeological, paleontological or architectural significance;	
	7.2.2 procedures to record, analyze, and mitigate the effects on cultural heritage resources and historic heritage sites, cultural sites previously identified through the heritage effects assessments conducted by the Proponent during the environmental assessment and, if applicable, the archaeological impact assessment completed for the final transmission line alignment;	Section 8, 9, 10
	7.2.3 a process for reporting information about physical and cultural heritage features and structures, sites or things of historical, archaeological, paleontological or architectural significance to Indigenous groups;	Section 11.1
	7.2.4 a process for informing workers of sensitive cultural areas; and	Section 6.0
	7.2.5 a chance find procedure to apply in the event that previously unidentified physical or cultural heritage features or structures, sites or things of historical, archaeological, paleontological or architectural significance are discovered by the Proponent. As part of the chance find procedure the Proponent shall:	Section 8.2, Appendix C
	7.2.5.1 immediately halt work at the location of the discovery, except work required to be undertaken to protect the integrity of the discovery;	Section 8.2, Appendix C
	7.2.5.2 delineate an area of at least 30 metres around the discovery as a no-work zone;	Section 8.2, Appendix C
	7.2.5.3 conduct an assessment at the location of the discovery taking into account British Columbia's Archaeological Impact Assessment Guidelines;	Section 8.2, Appendix C
	7.2.5.4 inform the Agency and Indigenous groups within 24 hours of the discovery, and allow Indigenous groups to monitor any work related to this discovery; and	Section 8.2, Appendix C
	7.2.5.5 consult with Indigenous groups and relevant authorities on the manner by which to comply with all applicable legal requirements and associated regulations, customs and protocols respecting the discovery, handling, recognition, recording, transferring and safekeeping of previously unidentified structures, sites or things of historical, archaeological, paleontological or architectural significance; and	Section 8.2, Appendix C
	7.2.5.6 consult Indigenous groups on the manner by which to protect the confidentiality of the discovery. The Proponent shall protect the confidentiality of the discovery in a manner that is consistent with provincial laws.	Section 8.2, Appendix C Section
7.3	The Proponent shall provide access, during all phases of the Designated Project and within 24 hours of an access request being received, to Indigenous groups to the mine site for cultural purposes or for exercising Aboriginal rights, to the extent that such access and exercise of rights are safe. The Proponent shall notify Indigenous groups in a timely manner if access to the mine site, or any part thereof, must be prohibited for safety reasons.	Section 10.2

APPENDIX C ARCHAEOLOGICAL AND CULTURAL HERITAGE CHANCE FIND PROCEDURE

Blackwater Gold Project: Archaeological and Cultural Heritage Chance Find Procedure

APPLICATION

This procedure applies to previously unidentified physical or cultural heritage features or structures, sites, or things of historical, archaeological, paleontological, or architectural significance and provides mitigation measure to avoid or reduce adverse effects.

PROCEDURE

All those responsible for the management, implementation, and operation of any aspect of this procedure will be adequately trained for their role. Prior to the commencement of Project work, all workers will:

1. Have received training on the use of this procedure;
2. Have reviewed and be aware of the requirements of this procedure;
3. Have reviewed and understood information pertaining to Chance Find Procedures appropriate for the work activity being undertaken.

If in the course of your work you discover what you suspect may be a possible archaeological, historic, cultural, spiritual and/or paleontological site, the following procedures apply:

Upon Discovery

1. Immediately halt work at the location of the discovery, except work required to be undertaken to protect the integrity of the discovery.
2. Delineate an area of at least 50 metres around the discovery as a 'no work' zone.
3. Note the location (GPS coordinates) and take photographs.
4. Inform your supervisory, Environmental Manager (EM) or Mine Manager immediately.
5. Prepare an initial Chance Find Form (attached).

Post-Discovery

- Within 24 hours of the discovery, the EM contacts the Project archaeologist and informs Indigenous groups and the Impact Assessment Agency (Table 1 provides key contact information).
- The EM invites Indigenous groups to monitor any work related to the discovery.
- The Project archaeologist conducts an assessment at the location of the discovery subject to BC's Archaeological Impact Assessment Guidelines and protocols that are in place with Indigenous groups respecting the discovery, handling, recognition, recording, transferring and safekeeping of previously unidentified structures, sites or things of historical, archaeological, paleontological or architectural significance and the confidentiality of a discovery.
 - If the discovery is an archaeological site, the Project archaeologist contacts the BC Archaeology Branch. The Project archaeologist, in consultation with the Archaeology Branch, conducts an investigation, and provides updates to the Archaeology Branch and Indigenous groups on the progress of the investigation. The Project Archaeologist works with the EM and Indigenous groups to prepare Site Report, which includes Instruction to recommence work in the area. The Site Report is submitted to the EM, Indigenous groups (and the Archaeology Branch).

- If the discovery is a historic site, the Project archaeologist contacts Indigenous groups and local communities to determine site significance.
- If the discovery is a cultural or spiritual site, the Project archaeologist contacts Indigenous groups to determine site significance.
- If the discovery is a paleontological site, the Project archaeologist contacts BC's Fossil Management Office.
- Subject to protocols with Indigenous groups, any material discovered on the Project site is stored in a secure location with limited access as follows:
 - If the material is archaeological, the artifact is held by the Project archaeologist until the *Heritage Conservation Act* (HCA) Section 12 permit has expired and the artifact(s) is submitted to the repository designated in the permit.
 - If the material is historical, the repository is determined in consultation with Indigenous nations and local communities.
 - If the material is cultural and/or spiritual, the repository is determined by Indigenous nations.
 - If the material is paleontological, the repository is determined by the Fossil Management Office.
- The handling and storage of material, apart from material outlined in the HCA Section 12 permit, is determined in consultation with Indigenous Nations.

Suspected Human Remains Discovery

If in the course of your work you discover what you suspect may be human remains, the following procedures apply:

- Immediately halt work in the area of the discovery.
- Do not disturb or move the possible human remains.
- Note the location (GPS coordinates) and take photographs.
- Report your discovery to your supervisor, EM or Mine Manager.
- If you are unable to contact a BW Gold representative, and the suspected human remains appear to be current, contact the Vanderhoof RCMP.

The following steps will generally be followed.

- The Coroners Service (Northern Region) in Prince George and Vanderhoof RCMP will be notified and the Coroners Service will determine whether the matter is of contemporary forensic concern.
- If the remains are not of forensic concern, the Archaeology Branch will attempt to facilitate disposition of the remains.
- If a cultural affiliation for the remains can be determined, the Archaeology Branch will contact an organization representing that cultural group. If the remains are of Indigenous ancestry, the Branch will contact the relevant Indigenous communities.
- If remains are buried and under no immediate threat of further disturbance, they will not be excavated or removed. If the remains are partially buried or uncovered, the Archaeology Branch will facilitate disposition.

Table 1: Key Contacts

Name	Email	Phone Number
Archaeology Branch	Archaeology@gov.bc.ca	1 (250) 953-3334
Blackwater Gold	office.blackwater@artemisgoldinc.com	1 (250) 567-3276
Fossil Management Office	Fossil.Management@gov.bc.ca	1 (250) 356-7506
Ulkatcho First Nation	chief@ulkatcho.ca	1 (250) 742-3260
Lhoosk'uz Dené Nation	admin@lhooskuz.com	1 (250) 992-3290
Nadleh Whut'en First Nation	TBC	1 (250) 690-7211
Stellat'en First Nation	TBC	1 (250) 699-8747
Saik'uz First Nation	TBC	1 (250) 567-9293
Nazko First Nation	TBC	1 (250) 992-7982
Skin Tyee Nation	TBC	1 (250) 694-3517
Tsilhqot'in Nation	TBC	1 (778) 799-2145 or (250) 392-3918
Métis Nation British Columbia	Communications@mnbc.ca	1 (604) 557-5851
Nee-Tahi-Buhn Band	TBC	1 (250) 694-3494
Impact Assessment Agency	iaac.vancouver.aeic@canada.ca	1 (604) 666-2431
BC Coroners Service Northern Region (Prince George)	N/A	1 (888) 991-2111 (toll free) 1 (250) 861 7429
Vanderhoof RCMP	N/A	1 (250) 567-2222
Prince George RCMP	N/A	1 (250) 562-3300

Cultural Heritage Chance Find Report Form

Recorder's Name/Affiliation: _____

Date: _____

Location of chance find (Location description,
UTM coordinates, development, depth below surface): _____

Description of find: _____

Method used to mark and protect find: _____

Distribution:

☐
BW Gold

☐
Site Archaeologist

☐
Indigenous
Nations

☐
Archaeology
Branch

☐
Fossil
Management
Office

Sketch Map

Photo

--	--
